

Senior Resource 2024 Guide



A Guide to Help Seniors Maintain the
Highest Quality of Life Possible

Bozeman Health

EMERGENCY NUMBERS

POLICE OR FIRE

Dial 911 (emergency) 582-2000 (non-emergency)

Adult Protective Services

(406) 522-2267 or (406) 522-2262

Bozeman Health Deaconess Hospital

(406) 414-5000

Bozeman Health Big Sky Medical Center

(406) 995-6995

Consumer Protection Office

(800) 481-6896

Help Center

(counseling, emergency food, clothing, shelter)

Dial 211 or call (406) 586-3333 (24 hour Crisis Line)

Insurance Problems

MT Commissioner of Securities and Insurance

(800) 332-6148 or www.csimt.gov

Montana Road Report - Dial 511

National Fraud Information Center - www.fraud.org

To Report Natural Gas Problems or Gas Odor

Northwestern Energy 24-hour line

(888) 467-2669

To Report Concerns with Care in a Long-Term Care Facility - Local Ombudsman

(406) 577-2428 or (406) 475-4532

Rocky Mountain Poison & Drug Center 24-Hour line

(800) 222-1222

TABLE OF CONTENTS

ACTIVITIES AND LEISURE	6
CARE AT HOME	7
Case Management.....	7
Home Health.....	7-8
Hospice	8-9
Personal Care	9-12
Private Duty Nursing.....	13
Other Care- At Home Resources	13-15
CARE OUTSIDE THE HOME	15
Adult Day Programming	15
Respite Care	15-18
EMPLOYMENT RESOURCES	18-19
FINANCIAL & TAX SERVICES	19
Financial Services	19-22
Tax Assistance	22
FOOD SERVICES	23
Food Banks.....	23-24
Grocery Programs.....	24
Grocery Stores that Deliver	25
Meals	26
FUNERAL SERVICES	27
HOUSING	28
Affordable Housing.....	28
Assisted Living	29-32
Independent Living.....	32-33
Memory Care.....	34-35
Nursing Homes and Transitional Care.....	35

Other Housing Resources.....	36
------------------------------	----

FREQUENTLY ASKED QUESTIONS

About Advance Care Planning.....	37
----------------------------------	----

LEGAL SERVICES

	38
--	----

MEDICAL.....

	39
--	----

Medicare.....	39
---------------	----

Cancer Screening.....	39
-----------------------	----

Clinics and Urgent Cares.....	40-42
-------------------------------	-------

Community Clinics.....	42-43
------------------------	-------

Dental Care.....	43
------------------	----

Hearing and Vision.....	44-45
-------------------------	-------

Hospital and Laboratory Services.....	46-47
---------------------------------------	-------

Medical Equipment.....	48-49
------------------------	-------

Mental Health.....	49-50
--------------------	-------

Pharmacy and In-Home Infusions.....	50
-------------------------------------	----

Transitional Care and Rehabilitation.....	51
---	----

MISCELLANEOUS SERVICES

Moving and Decluttering.....	52
------------------------------	----

Pet Services.....	52
-------------------	----

Senior Centers.....	53
---------------------	----

Support Groups and Services.....	54-56
----------------------------------	-------

Transportation.....	56-57
---------------------	-------

Veteran Services.....	58-60
-----------------------	-------

Volunteer Opportunities.....	61-63
------------------------------	-------



NOTE OF DISCLAIMER

Bozeman Health provides this directory of community services for your information.

We encourage anyone utilizing these services to do the following:

- 1.** Thoroughly investigate the background and references of agencies and professional references of private individuals.
- 2.** If you hire someone to provide care in your home, make sure they are registered as an Independent Contractor with the State of Montana, or an employee of a Licensed Agency.
- 3.** The Independent Contractor or agency should be licensed, insured, have Workers' Compensation insurance and have professional liability insurance.
- 4.** Ask others about their service and experience with the agency or individual.
- 5.** If you are asked to sign a contract, please read the contract carefully. Ask questions. Make sure you understand it before signing.

The listings in this directory are not an endorsement of the service providers by the Bozeman Health.

This guide has been made as accurate as possible at the time of printing. Please be advised that organizations, programs, and contact information are subject to change.

If you are a business and would like to be included in this guide, or to update information, please email: printshop@bozemanhealth.org

ACTIVITIES AND LEISURE

Bozeman Parks and Recreation Department

Payment Methods Accepted: Private Pay

Ph: (406) 582-2290

www.bozeman.net/recreation

Story Mill Community Center

600 Bridger Drive | Bozeman MT 59715

Active Aging fitness programs and more for 55+.

Sign up at Story Mill Community Center.

Eagle Mount

Payment Methods Accepted: Private Pay

Ph: (406) 586-1781 Fax: (406) 586-5794

eaglemount@eaglemount.or | www.eaglemount.org

6901 Goldenstein Lane | Bozeman MT 59715

Therapeutic recreation. Scholarships available.

Bozeman Senior Social Center

Payment Methods Accepted: Private Pay

Ph: (406) 586-2421

807 N Tracy Ave | Bozeman, MT

Fitness classes, trips, games, educational seminars, and lunches.



CARE AT HOME

CASE MANAGEMENT

Cottonwood Case Management

Payment Methods Accepted: Private Insurance, Private Pay

Ph: (406) 587-4880

PO Box 6626 | Bozeman MT 59771

Geriatric case management, guardianship, conservatorship, and court visitor reports, one-to-one in-home care assistance.

Genuine Services

Payment Methods Accepted: Private Insurance, Private Pay

Ph: (406) 580-4430

www.genuineservices.net

Emily Propst, M.A. Gerontology

Certified Caregiver | Dementia Care

HOME HEALTH

Physician-ordered skilled medical care such as nursing and physical, occupational and speech therapy to clients in their homes. Also home health aide and medical social service assistance.

Big Sky Home Health

Payment Methods Accepted: Medicare, Medicaid, Private Insurance, VA, Private Pay

Ph: (406) 551-2273 Fax: (406) 551-2073

www.bigskyhhh.com

205 Haggerty Lane, Suite 120 | Bozeman MT 59715

Enhabit Home Health & Hospice

Payment Methods Accepted: Medicare, Medicaid, Private Insurance, VA, Private Pay

Ph: (406) 586-0022 Fax: (406) 586-1886

www.ehab.com

3810 Valley Commons, Suite 1 | Bozeman MT 59718

Eden Health

Payment Methods Accepted: Medicare, Medicaid, Private Insurance, Private Pay, VA

Ph: (406) 587-8710 Fax: (406) 587-0627

www.eden-health.com

2075 Charlotte Street | Bozeman MT 59718

HOSPICE

Provides end-of-life care and services including nursing, personal care, spiritual care and social services, as well as companionship and respite care, massage, music, and physical and speech therapies. A referral can be made by anyone but an order will need to be signed by a doctor.

Compassus - Bozeman Hospice

Payment Methods Accepted: Medicare, Medicaid, Private Insurance, VA

Ph: (406) 813-5089 Fax: (406) 556-0643

www.compassus.com

301 Edelweiss Dr., Suite 6 | Bozeman MT 59718

Big Sky Home Health

Payment Methods Accepted: Medicare, Medicaid, Private Insurance, VA, Private Pay

Ph: (406) 551-2273 Fax: (406) 551-2073

www.bigskyhhh.com

205 Haggerty Lane, Suite 120 | Bozeman MT 59715

Enhabit Home Health & Hospice

Payment Methods Accepted: Medicare, Medicaid, Private Insurance, VA, Private Pay

Ph: (406) 586-0022 Fax: (406) 586-1886

www.ehab.com

3810 Valley Commons, Suite 1 | Bozeman MT 59718

Eden Health

Payment Methods Accepted: Medicare, Medicaid, Private Insurance, Private Pay, VA

Ph: (406) 587-8710 Fax: (406) 587-0627

www.eden-health.com

2075 Charlotte Street | Bozeman MT 59718

Stillwater Hospice of Montana

Payment Methods Accepted: Medicare, Medicaid, Private Insurance, VA

Ph: (406) 404-2266 Fax: (406) 404-2227

tracebedwell@stillwaterhospice.com

www.stillwaterhospice.com

5 West Mendenhall, Suite 202 | Bozeman MT 59715

PERSONAL CARE

Trained caregivers or personal aides may help with bathing, dressing, meal preparation, light housekeeping and transportation. Non-medical assistance.

AdvoCare Home Care Services

Payment Methods Accepted: Call for information

Ph: (406) 582-5402

www.advocarehcs.com

3701 Trakker Trail, Unit 2A | Bozeman MT 59718

Companion Care, LLC

Payment Methods Accepted: Private Pay

Ph: (406) 570-2449

companioncaremt@gmail.com

Patty Dickerson

Bozeman MT 59718

Cottonwood Case Management

Payment Methods Accepted: Private Insurance, Private Pay

Ph: (406) 587-4880

dsaundersccm@gmail.com

PO Box 6626 | Bozeman MT 59771

Big Sky Home Health

Payment Methods Accepted: Medicare, Medicaid, Private Insurance, VA, Private Pay

Ph: (406) 551-2273 Fax: (406) 551-2073

www.bigskyhhh.com

205 Haggerty Lane, Suite 120 | Bozeman MT 59715

Home Care Services – Home Care Montana

Payment Methods Accepted: Call for information

Ph: (866) 839-5970

info@homecaremontana.org

www.homecaremontana.org

PO Box 900 | 82 8th Street | Belgrade MT 59714



Home Instead Senior Care

Payment Methods Accepted: Private pay, Long-term care insurance, VA and grants.

Ph: Bozeman (406) 213-5453

Helena (406) 513-1701

bozemanmt@homeinstead.com

www.HomeInstead.com/751

517 S 22nd Ave, Ste 8 | Bozeman MT 59718

Personal care, Alzheimer's and dementia, hospice support, RN care plans and quality assurance, companionship, respite, medication management and case management.

HRDC Senior Programs Coordinator – Homemaker Services

Payment Methods Accepted: Free Services

Ph: (406) 587-4486

seniorprograms@thehrdc.org

www.thehrdc.org

32 S. Tracy Ave. | Bozeman MT 59715

In-home assistance for low-income and at-risk seniors.

Ability Montana

Payment Methods Accepted: Medicaid

Ph: (800) 735-6457 Fax: (406) 522-7302

www.abilitymt.org

825 Great Northern Blvd | Helena MT 59601

Ability Montana is a non-profit agency that provides services to promote independence for people on Medicaid with disabilities, injury and the elderly. Self-directed Personal Assistance Services Program. Orientation and mobility services for those with low vision or blindness. Information and referral services are provided free.

Qualicare MT

Payment Methods Accepted: VA, Private Pay (cash, check, credit card/ACH/EFT), Long Term Care Insurance, Other

Ph: (406) 551-6700 Fax: (406) 551-6445

Help@QualicareMT.com | www.QualicareMT.com

705 Osterman Drive, Unit G | Bozeman MT 59715

Locally owned and managed by a registered nurse. Escorted transportation, preparation and follow up to physician appointments, Nurse Case Management, Medication Management and more. Nurse managed care for all ages 18+ and levels of need. Up to 24/7 in home, hospital or facility. .

Heart to Heart Homecare

Payment Methods Accepted: Private Pay, VA

Ph: (406) 577-2399

info@hearttohearhomecare.net

www.hearttohearhomecare.net

601 Nikles Dr., Suite 2D | Bozeman, MT 59715

Eden Health

Payment Methods Accepted: Medicare, Medicaid, Private Insurance, Private Pay, VA

Ph: (406) 587-8710 Fax: (406) 587-0627

www.eden-health.com

2075 Charlotte Street | Bozeman MT 59718

“Growing old is humbling and it takes effort to accomplish this stage of life with dignity.”

— Kilroy J. Oldster, Dead Toad Scrolls

PRIVATE DUTY NURSING

Licensed nursing care for individuals in their residence.

Qualicare MT

Payment Methods Accepted: Private Pay (cash, check, credit card/ACH/EFT), Long Term Care Insurance, VA, Other

Ph: (406) 551-6700 Fax: (406) 551-6445

help@QualicareMT.com

www.QualicareMT.com

705 Osterman Drive, Unit G | Bozeman MT 59715

Escorted transportation, preparation and follow up to physician appointments, Nurse Case Management, Medication Management and more.

OTHER CARE AT HOME RESOURCES

Befrienders

Payment Methods Accepted: Free

Ph: (406) 522-8169

info@befriendersbozeman.org

www.befriendersbozeman.org

Bozeman Senior Center

807 N. Tracy | Bozeman MT 59715

Befrienders matches volunteers with seniors for weekly companionship.

Family Outreach

Payment Methods Accepted: Free if eligible

Ph: (406) 587-2477

www.familyoutreach.org

1315 E. Main | Bozeman MT 59715

Home visits to educate and train families and friends of people with disabilities of any age.

Gallatin County Love INC

Payment Methods Accepted: Free Services

Ph: (406) 587-3008 Help Line Fax: (406) 585-3378

www.Loveincgc.org

141 Discovery Drive | Bozeman MT 59718

We meet any manageable need other than direct financial assistance.

The Help Center Telecare Program

Payment Methods Accepted: Free Services

Ph: (406) 586-3333

Info & Referral dial 211

24 hour Crisis Line: 988

info@bozemanhelpcenter.org

www.bozemanhelpcenter.org

421 E. Peach St | Bozeman MT 59715

Telecare is a service where a daily phone call is made to elderly or homebound individuals as a social call, safety check and/or medication reminder.

HRDC Senior Programs

Payment Methods Accepted: Free Service

Ph: (406) 587-4486

seniorprograms@thehrdc.org

www.thehrdc.org

300 N. Willson, Ste. 3008 | Bozeman MT 59715

One-on-one assistance for at-risk or low-income seniors needing help connecting to resources.

MT DPHHS Montana Lifespan Respite Voucher Program

Payment Methods Accepted: Free Service

Ph: 1-800-332-2272

<https://dphhs.mt.gov/respite>

Information source and application for assistance.

CARE OUTSIDE THE HOME

ADULT DAY PROGRAMMING

Dementia care for adults on an hourly rate. Contact each community listed for their information and requirements.

Edgewood Belgrade Memory Care

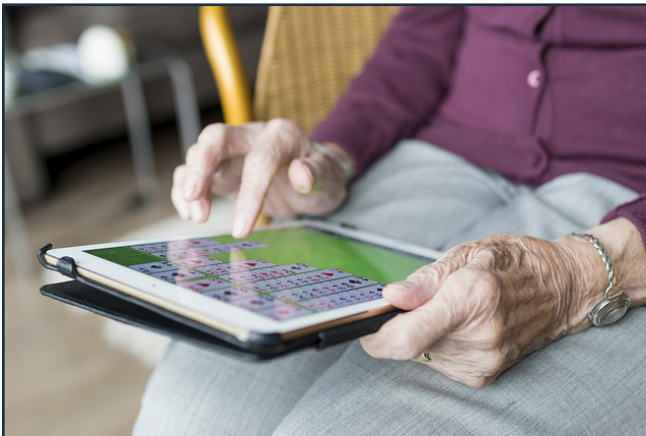
Payment Methods Accepted: Medicaid Waiver, Private Insurance, Private Pay

Ph: (406) 388-9439

www.edgewoodhealthcare.com/community/edgewood-in-belgrade/

1011 Cardinal Dr. | Belgrade MT 59714

Memory care assisted living, long-term and short-term day services.



RESPITE CARE

Short term stay, length of stay will vary per community, usually 7-30 days are required. Contact each community listed for their information and requirements.

For in-home respite care, see Care At Home – Personal Care. (pages 5-12)

BeeHive Homes of Belgrade

Payment Methods Accepted: Private Pay, VA,
Long-Term Care Insurance

Ph: (406) 579-9545

www.Beehiveshome.com

1107 Happy Lane | Belgrade MT 59714

Home environment.

Bozeman Health Hillcrest Senior Living – Birchwood

Payment Methods Accepted: Private Pay

Ph: (406) 414-2008

www.HillcrestLivingBozeman.com

1201 Highland Blvd. | Bozeman MT 59715

Bozeman Lodge

Payment Methods Accepted: Private Pay,
Private Long-Term Care Insurance

Ph: (406) 551-6754

www.Bozeman-Lodge.com

1547 N. Hunters Way | Bozeman MT 59718

Brookdale Springmeadows Assisted Living

Payment Methods Accepted: Medicaid, Private Insurance, Private Pay

Ph: (406) 898-3868

www.brookdale.com

3175 E. Graf | Bozeman MT 59715

Edgewood Belgrade Memory Care

Payment Methods Accepted: Medicaid Waiver, Private Insurance, Private Pay

Ph: (406) 388-9439

www.edgewoodhealthcare.com/community/edgewood-in-belgrade/

1011 Cardinal Dr. | Belgrade MT 59714

Memory care assisted living, long-term and short-term day services.

Highgate Senior Living

Payment Methods Accepted: Private Pay, Private Insurance

Ph: (406) 587-5100

www.highgateseniorliving.com

2219 W. Oak St. | Bozeman MT 59718

Parkhaven Retirement and Assisted Living

Payment Methods Accepted: Medicaid Waiver, Private Long-term Care Insurance, Private Pay

Ph: (406) 282-7488

www.parkhavenretirement.com

100 Hamilton Ct. | Manhattan MT 59741

Secure memory care community.

Spring Creek Inn

Payment Methods Accepted: Medicaid Waiver, Private Insurance (long-term)

Ph: (406) 586-0074

www.koelschseniorcommunities.com

1641 Hunters Way | Bozeman MT 59718

Secure memory care community with 24-hour on-site nursing, day-stay and hourly respite care.

The Springs Living at Bozeman

Payment Methods Accepted: Private Pay, Long-term Care Insurance

Ph: (406) 551-6788

www.thespringsliving.com

2632 Catron St. | Bozeman MT 59718

EMPLOYMENT RESOURCES

Career Transitions

Payment Methods Accepted: Free Services

Ph: (406) 388-6701 Fax: (406) 388-6592

ct@careertransitions.com

www.careertransitions.com

PO Box 145 | Belgrade MT 59714

Resource Center for help with job searches, resumes, career counseling and classes like CNA, CDL, HISET, and more.

Job Service

Payment Methods Accepted: Free Services

Ph: (406) 582-9200 Fax: (406) 582-9210

bozemanjsc@mt.gov

<https://montanaworks.gov>

Job search assistance, resume writing, interviewing techniques, job training and more.

Ability Montana

Payment Methods Accepted: Medicaid

Ph: (800) 735-6457 Fax: (406) 522-7302

www.abilitymt.org

825 Great Northern Blvd | Helena MT 59601

Ability Montana is a non-profit agency that provides services to promote independence for people on Medicaid with disabilities, injury and the elderly. Self-directed Personal Assistance Services Program. Orientation and mobility services for those with low vision or blindness. Information and referral services are provided free.

FINANCIAL & TAX SERVICES

FINANCIAL SERVICES

Big Sky Rx Program

Payment Methods Accepted: Call for information

Toll Free: (866) 369-1233

www.dphhs.mt.gov/MontanaHealthcarePrograms/BigSky

PO Box 202915 | Helena MT 59620

This State of Montana program pays all, or part, of Medicare Part D Prescription Drug Plan (PDP) premiums for eligible Montanans.

Bozeman Health Patient Financial Services

Payment Methods Accepted: Call for information

Ph: (406) 414-1720

www.bozemanhealth.org

915 Highland Blvd. | Bozeman MT 59715

Help with billing and insurance questions and concerns.

Emergency Rental Assistance - HRDC

Payment Methods Accepted: Call for information

Ph: (406) 587-4486

www.thehrdc.org

32 S. Tracy | Bozeman MT 59715

Energy Share of Montana

Payment Methods Accepted: Call for information

Toll Free: (888) 779-7589 Ph: (406) 442-4900

www.energysharemt.com

Assistance with energy bills.

Low Income Energy Assistance Program (LIEAP) HRDC

Payment Methods Accepted: Call for information

Ph: (406) 587-4486 Toll Free: (800) 332-2796

www.thehrdc.org

32 S. Tracy | Bozeman MT 59715

Help with heating costs and weatherization.

Medicare Counseling

Payment Methods Accepted: Free Services

Ph: (406) 587-4486

seniorprograms@thehrdc.org

300 N. Willson, Ste. 3008 | Bozeman MT 59715

SHIP counselors assist Medicare beneficiaries in understanding insurance choices, including Medicare Part D and Advantage plans and Medigap plans. Assists with applications for Medicaid, Medicare savings programs and other assistance programs.

Ability Montana

Payment Methods Accepted: Medicaid

Ph: (800) 735-6457 Fax: (406) 522-7302

www.abilitymt.org

825 Great Northern Blvd | Helena MT 59601

Ability Montana is a non-profit agency that provides services to promote independence for people on Medicaid with disabilities, injury and the elderly. Self-directed Personal Assistance Services Program. Orientation and mobility services for those with low vision or blindness. Information and referral services are provided free.

Office of Public Assistance

Payment Methods Accepted: Call for information

Ph: 1-888-706-1535 Fax: 1-877-418-4533

www.apply.mt.gov

12 N. 3rd Ave. | Bozeman MT 59715

Assistance with Medicaid, Medicare Savings Plan, Food, Grandparents raising grandchildren.

Property Tax Assistance Programs

Payment Methods Accepted: Call for information

Ph: (406) 582-3400

www.revenue.mt.gov

2273 Boot Hill Ct., Suite 100 | Bozeman MT 59715

Various programs that may help you reduce property taxes; Elderly/Homeowner renter credit. Also disabled veterans program.

Social Security Administration - Bozeman office

Payment Methods Accepted: Call for information

Toll Free: (800) 772-1213 Fax: (833) 452-0419

www.SocialSecurity.gov

3205 N. 27th Ave. | Bozeman MT 59718

Social Security benefits, SSI, retirement, Medicare, survivor/widow.

USDA Rural Development

Payment Methods Accepted: Call for information

Ph: (406) 585-2587

www.rd.usda.gov/mt

2229 Boot Hill Ct. | Bozeman MT 59715

Direct and guaranteed home loans and grants for housing needs for income eligible people; home repairs. Partners with Habitat for Humanity.

TAX ASSISTANCE

AARP Tax-Aide (See Belgrade and Bozeman in the “Senior Centers” section)

Payment Methods Accepted: Free Services

VITA - Volunteer Income Tax Assistance

Payment Methods Accepted: Free Services

Ph: (406) 587-4486 HRDC or (406) 994-6796 MSU

Thehrdc.org/financial-development/tax-assistance/

Bozeman MT

FOOD SERVICES

FOOD BANKS

Big Sky Food Bank (HRDC)

Payment Methods Accepted: Free Service

Ph: (406) 995-3088

www.bigskyfoodbank.org

47995 Gallatin Rd. | Big Sky, MT 59716

Emergency food assistance and grocery delivery to area seniors 60+.

Open Tuesday & Thursday 3:00 pm - 7:00 pm, Wednesday & Friday 11:00 am - 3:00 pm.

Gallatin Valley Food Bank (HRDC)

Payment Methods Accepted: Free Service

Ph: (406) 587-4486

Email: infogvfb@thehrdc.org

www.gallatinvalleyfoodbank.org

206 E Griffin Dr | Bozeman MT 59715

*Food Assistance: Thursday 1:00pm-4:00pm, Tuesday 5:00pm-7:00pm, Friday 9:00am-12:00pm
Delivery available if needed. Senior Grocery Program available if qualified.*

Headwaters Area Food Bank (HRDC)

Payment Methods Accepted: Free Service

Ph: (406) 285-3559

Email: hafb@thehrdc.org

www.thehrdc.org/food-nutrition/headwaters-food-bank/

216 1st Ave. West | Three Forks MT 59752

Serving Three Forks and surrounding communities.

Open Tuesday 10 am - 2 pm, Wednesday 2 - 6 pm, Thursday 10 am - 2 pm.

West Yellowstone Food Bank (HRDC)

Payment Methods Accepted: Free Service

Ph: (406) 646-7311

www.townofwestyellowstone.com

440 Yellowstone Ave. | West Yellowstone MT 59758

Open Monday - Friday 8:00 am - 4:30 pm

GROCERY PROGRAMS

SNAP – Supplemental Nutrition Assistance Program – Office of Public Assistance

Payment Methods Accepted: Free Service

Help Line: (888)-706-1535

www.dphhs.mt.gov or apply.mt.gov

12 N. 3rd Ave | Bozeman MT 59715

Summer Farmers' Market Vouchers - Bozeman Senior Center

Payment Methods Accepted: Free Service

Ph: (406) 586-2421

www.bozemanseniorcenter.org

807 N. Tracy | Bozeman MT 59715

People age 60+ on limited incomes may receive a \$50 voucher for Montana-grown produce, June–Sept. at various farmers' markets in Gallatin County.

“The wisest young is the young who can look at the world through the eyes of the elderly!”

— Mehmet Murat ildan

GROCERY STORES THAT DELIVER

L & F Food Farm – Manhattan

Payment Methods Accepted: Free Service

Ph: (406) 284-3221

106 E. Main St. | Manhattan MT 59741

Call Tuesdays and Fridays before 2:00 pm for same day delivery. Curbside pickup available daily.

Instacart On-Line Delivery Service

Payment Methods Accepted: Private Pay

www.instacart.com

Delivering goods from Albertsons, Costco, CVS, CVS Pharmacy, Family Dollar, Petco, Safeway, Smith's, Staples, and Target to Bozeman, Belgrade and Manhattan.

DELIVERY SERVICES

Same Day Delivery

Payment Methods Accepted: Private Pay

Ph: (406) 539-3810

Adam.SameDay@gmail.com

Bozeman MT



MEALS

Fork & Spoon (HRDC)

Payment Methods Accepted: Pay what you can.

Ph: (406) 206-9509

Forkandspoonbozeman.org

206 E Griffin Dr | Bozeman MT 59715

Evening meals provided in restaurant-style.

Monday – Friday 5pm-7pm

See “Senior Centers” page 54

Payment Methods Accepted: Private Pay

Group meals and Meals-on-Wheels. Contact your local Senior Center for details.

Senior Nutrition Services – HRDC Senior Programs

Payment Methods Accepted: Free Service

Ph: (406) 587-4486

www.thehrdc.org

206 E Griffin Dr. | Bozeman MT 59715

HRDC provides one-on-one assistance for low-income seniors needing help with food.

“Not everyone understands that old age simply means your body looks old, but your soul is still that vibrant young twenty something.”

FUNERAL SERVICES

Dahl Funeral and Cremation Service

Payment Methods Accepted: Insurance, Private Pay, Visa/MC, Crowdfunding

Ph: (406) 586-5298

www.dahlcares.com

300 Highland Blvd. | Bozeman MT 59715

New Tribute Center/Community Center available to all the families we serve, and also for community events.

Dokken-Nelson Funeral Service and Crematory

Payment Methods Accepted: Private Insurance, Private Pay, Visa/MC

Ph: (406) 587-3184

www.dokkennelson.com

113 S. Willson Ave. | Bozeman MT 59715



HOUSING

AFFORDABLE HOUSING - BOZEMAN

HRDC Housing

Payment Methods Accepted: Free Services

Ph: (406) 587-4486

www.thehrdc.org

32 N. Tracy | Bozeman MT 59715

Provides one-on-one assistance for low-income seniors needing help with housing. Winter warming center.

Darlinton Manor

Payment Methods Accepted: Checks, Cashiers Checks

Ph: (406) 587-2981

606 N. 5th | Bozeman MT 59715

Legion Villa

Payment Methods Accepted: Call for information

Ph: (406) 587-7612

1215 W. Durston | Bozeman MT 59715

Summer Wood Apartments

Payment Methods Accepted: Checks, EFT

Ph: (406) 585-2806 or 800-466-7722

AccessibleSpace.org/summer-wood-apartments

1441 N. 15th Ave. | Bozeman MT 59715

One-bedroom apartments for qualifying seniors age 62+.

ASSISTED LIVING

Licensing criteria for assisted living facilities:

Level A: Assistance with dressing, bathing, medication reminders and other personal care needs provided in a home-like atmosphere.

Level B: Requires oversight by a physician with assessment and care planning for needs similar to nursing home care but still offered in a more home-like setting.

Level C: Dementia and Alzheimer's care.

BELGRADE

BeeHive Homes of Belgrade (A,B)

Payment Methods Accepted: Private Pay

Ph: (406) 579-9545

1107 Happy Lane | Belgrade MT 59714

Home environment.

Edgewood Belgrade Memory Care (A,B,C)

Payment Methods Accepted: Medicaid Waiver, Private Insurance, Private Pay

Ph: (406) 388-9439

www.edgewoodhealthcare.com/community/edgewood-in-belgrade/

1011 Cardinal Dr. | Belgrade MT 59714

Memory care assisted living, long-term and short-term day services.

Open Arms Elder Care (A, B)

Payment Methods Accepted: Medicaid Waiver,
Private Pay, VA

Ph: (406) 388-9814

505 Minnesota St. | Belgrade MT 59714

Family atmosphere.

BOZEMAN

Bozeman Health Hillcrest Senior Living - Birchwood (A,B)

Payment Methods Accepted: Private Pay

Ph: (406) 414-2008

www.HillcrestLivingBozeman.com

1201 Highland Blvd. | Bozeman MT 59715

Studio and one-bedroom apartment homes.

Bozeman Lodge (A)

Payment Methods Accepted: Private Pay, Private Long-
Term Care Insurance

Ph: (406) 551-6754

www.Bozeman-Lodge.com

1547 N. Hunters Way | Bozeman MT 59718

Brookdale Springmeadows Assisted Living (A)

Payment Methods Accepted: Medicaid, Private Insurance,
Private Pay

Ph: (406) 898-3868

www.brookdale.com

3175 E. Graf | Bozeman MT 59715

High Country Care (A,B)

Payment Methods Accepted: Medicaid Waiver, Private Insurance (not all), Private Pay, VA

Ph: (406) 582-9068

8659 Haggerty Lane | Bozeman MT 59715

Family environment in a house setting.

Highgate Senior Living (A,B,C)

Payment Methods Accepted: Private Insurance, Private Pay

Ph: (406) 587-5100

www.highgateseniorliving.com

2219 W. Oak St. | Bozeman MT 59718

Memory care provided.

The Springs Living at Bozeman (A,B,C)

Payment Methods Accepted: Private Pay, Long-term Care Insurance

Ph: (406) 551-6788

www.thespringsliving.com

2632 Catron St. | Bozeman MT 59718

MANHATTAN

Churchill Retirement Home and Assisted Living (A, B)

Payment Methods Accepted: Private Insurance, Private Pay

Ph: (406) 282-7233

6151 Shady Rest St. | Manhattan MT 59741

Parkhaven Retirement and Assisted Living (A,B,C)

Payment Methods Accepted: Medicaid Waiver, Private Long-term Care Insurance, Private Pay

Ph: (406) 282-7488

www.parkhavenretirement.com

100 Hamilton Ct. | Manhattan MT 59741

Secure memory care community.

INDEPENDENT LIVING

BOZEMAN

Bozeman Health Hillcrest Senior Living – Aspen Pointe

Payment Methods Accepted: Private Pay

Ph: (406) 414-2008

www.HillcrestLivingBozeman.com

1201 Highland Blvd. | Bozeman MT 59715

One or two bedroom apartment homes.

Bozeman Lodge

Payment Methods Accepted: Private Pay, Private Long-Term Care Insurance

Ph: (406) 551-6754

www.Bozeman-Lodge.com

1547 N. Hunters Way | Bozeman MT 59718

Brookdale Springmeadows Assisted Living

Payment Methods Accepted: Medicaid, Private Insurance,
Private Pay

Ph: (406) 898-3868

www.brookdale.com

3175 E. Graf | Bozeman MT 59715

Highgate Senior Living

Payment Methods Accepted: Private Pay, Private Insurance

Ph: (406) 587-5100

www.highgateseniorliving.com

2219 W. Oak St. | Bozeman MT 59718

The Springs Living at Bozeman

Payment Methods Accepted: Private Pay,
Long-term Care Insurance

Ph: (406) 551-6788

www.thespringsliving.com

2632 Catron St. | Bozeman MT 59718

MANHATTAN

Churchill Retirement Home

Payment Methods Accepted: Private Pay

Ph: (406) 282-7233

6151 Shady Rest St. | Manhattan MT 59741

Parkhaven Retirement and Assisted Living

Payment Methods Accepted: Medicaid Waiver, Private
Long-term Care Insurance, Private Pay

Ph: (406) 282-7488

www.parkhavenretirement.com

100 Hamilton Ct. | Manhattan MT 59741

Secure memory care community.

MEMORY CARE

For memory care in the home,
see [Care At Home – Personal Care](#)

BELGRADE

Edgewood Belgrade Memory Care

Payment Methods Accepted: Medicaid Waiver, Private Insurance, Private Pay

Ph: (406) 388-9439

www.edgewoodhealthcare.com/community/edgewood-in-belgrade/

1011 Cardinal Dr. | Belgrade MT 59714

Memory care assisted living, long-term and short-term day services.

BOZEMAN

Highgate Senior Living

Payment Methods Accepted: Private Insurance, Private Pay

Ph: (406) 587-5100

www.highgateseniorliving.com

2219 W. Oak St. | Bozeman MT 59718

Memory care provided.

Parkhaven Retirement and Assisted Living

Payment Methods Accepted: Medicaid Waiver, Private Long-term Care Insurance, Private Pay

Ph: (406) 282-7488

www.parkhavenretirement.com

100 Hamilton Ct. | Manhattan MT 59741

Secure memory care community.

Spring Creek Inn

Payment Methods Accepted: Medicaid Waiver, Private Insurance (long-term)

Ph: (406) 586-0074

www.koelschseniorcommunities.com

1641 Hunters Way | Bozeman MT 59718

Secure memory care community with 24-hour on-site nursing, day-stay and hourly respite care.

The Springs Living at Bozeman

Payment Methods Accepted: Private Pay, Long-term Care Insurance

Ph: (406) 551-6788

www.thespringsliving.com

2632 Catron St. | Bozeman MT 59718

NURSING HOMES & TRANSITIONAL CARE

Gallatin Rest Home

Payment Methods Accepted: Medicare, Medicaid, Private Insurance, Private Pay

Ph: (406) 582-3300

1221 W. Durston | Bozeman MT 59715

Long-term care and short-term rehabilitation.

OTHER HOUSING RESOURCES

Fix-Up Festival – Bozeman Sunrise Rotary Club

Payment Methods Accepted: Free Services

www.fixupfestival.com

Bozeman MT

Volunteers do home repairs for elderly, disabled or low-income home owners. Apply by April; repairs take place in the Fall.

Warming Center – HRDC Emergency Shelter

Payment Methods Accepted: Free Services

Ph: (406) 556-1123

www.thehrdc.org

2015 Wheat Drive

Bozeman MT 59715

Winter warming center, nightly, November – March.



FREQUENTLY ASKED QUESTIONS ABOUT ADVANCE CARE PLANNING

Advance Care Planning = Gift to your Loved Ones

Good advance planning for health care decisions is an on-going conversation about your values, priorities, and what matters most to you when faced with a serious illness.

There are a variety of worksheets, videos and resources available to help you discover, clarify and communicate what is important to you regarding healthcare decisions, especially when face of serious illness.

This information should be shared with your loved ones and your medical providers.

Tips for Starting to Communicate Your Healthcare Decisions:

Start thinking about the conversation. You can begin by writing a letter to yourself, a loved one, or a friend.

Consider having a practice conversation with a friend or someone who is a good listener.

Having the conversation isn't a one-time thing. It will be a series of conversations.

It is important to continue talking about your healthcare decisions now – not during a medical crisis.

**Advance Care Planning Resources:
PrepareForYourCare.org
TheConversationProject.org**

LEGAL SERVICES

Adult Protective Services

Payment Methods Accepted: Free Services

Ph: CALL 911 IF EMERGENCY

Toll Free: (844) 277-9300

www.aps.mt.gov/SLTC/aps/index

Bozeman MT 59715

Montana Fair Housing

Payment Methods Accepted: Free Services

Ph: (406) 782-2573 Toll Free: (800) 929-2611

Email: inquiry@montanafairhousing.org

www.montanafairhousing.org

501 E. Front Street, Suite 533 | Butte MT 59701

Promotes equal opportunity in all housing-related transactions.



MEDICARE

Medicare Counseling

Payment Methods Accepted: Free Services

Ph: (406) 587-4486

Email: seniorprograms@thehrdc.org

300 N. Willson, Ste. 3008 | Bozeman MT 59715

SHIP counselors assist Medicare beneficiaries in understanding insurance choices, including Medicare Part D and Advantage plans and Medigap plans. Assists with applications for Medicaid, Medicare savings programs and other assistance programs.

CANCER SCREENING

Gallatin City-County Health Department

Payment Methods Accepted: Free Services

Ph: (406) 582-3100

www.healthygallatin.org

215 W. Mendenhall | Bozeman MT 59715

Healthy Gallatin coordinates the state cancer screening program and provides free breast, cervical and colorectal cancer screening for eligible individuals through local providers.

Bozeman Health Mammogram Project

Ph: (406) 414-5548

communitybenefit@bozemanhealth.org

www.bozemanhealth.org/mammogramproject

Free or reduced cost mammogram screening for qualified women.

CLINICS AND URGENT CARES

BELGRADE

Bozeman Health Belgrade Clinic

Payment Methods Accepted: Call for information

Ph: (406) 414-3334

206 Alaska Frontage Road | Belgrade MT 59714

Urgent care, pediatrics, family medicine, physical therapy & sports medicine, lab work, and diagnostic imaging.

Bozeman Health B2 UrgentCare

Payment Methods Accepted: Call for information

Ph: (406) 414-3710

100 Alaska Frontage Road | Belgrade MT 59714

www.b2cares.com

Urgent care - open everyday 8 a.m. to 7 p.m.

BestMed Urgent Care – Belgrade Clinic

Payment Methods Accepted: Private Insurance, Private Pay

Ph: (406) 388-8708

www.bestmedclinics.com

403 W. Main | Belgrade MT 59714

BIG SKY

Bozeman Health Big Sky Medical Center

Payment Methods Accepted: Call for information

Ph: (406) 995-6995

www.bigskymedicalcenter.org

334 Town Center Ave. | Big Sky MT 59716

Emergency services, pharmacy, family clinic, lab, diagnostic imaging.

Bozeman Health B2 UrgentCare

Payment Methods Accepted: Call for information

Ph: (406) 995-6650

83 Beaverhead Trail | Big Sky MT 59714

www.b2cares.com

Urgent care - open everyday 8 a.m. to 7 p.m.

BOZEMAN

B2 MicroCare

Payment Methods Accepted: Call for information

Ph: (406) 414-4870

www.b2microcare.com

1805 W. Oak St., #3 | Bozeman, MT 59715

Book same-day appointments online.

B2 Urgent Care

Payment Methods Accepted: Call for information

Ph: (406) 414-4800

www.b2cares.com

1006 W. Main | Bozeman MT 59715

BestMed Urgent Care – Bozeman Clinic

Payment Methods Accepted: Private Insurance, Private Pay

Ph: (406) 312-8360

www.bestmedclinics.com

862 Harmon Stream Blvd., Suite 101 | Bozeman MT 59718

SCL – Health Medical Group

Payment Methods Accepted: Call for information

Ph: (406) 556-5888

www.sclhealth.org

711 W. Main Street | Bozeman MT 59715

THREE FORKS

Three Rivers Medical Clinic

Payment Methods Accepted: Call for information

Ph: (406) 285-3251

www.threeriversmedicalclinic.net

16 Railway Avenue | Three Forks MT 59752

COMMUNITY CLINICS

Assistance with routine medical care, immunizations and preventive care for income-eligible persons.

Community Health Partners CHP - Belgrade

Payment Methods Accepted: Medicare, Medicaid, Private Insurance, Private Pay (sliding scale fees)

Ph: (406) 924-5754

www.chphealthmt.org

19 E. Main | Belgrade MT 59714

Community Health Partners CHP - Bozeman

Payment Methods Accepted: Medicare, Medicaid, Private Insurance, Private Pay (sliding scale fees)

Ph: (406) 585-1360

www.chphealthmt.org

1695 Tschache Ln | Bozeman MT 59715

Community Health Partners CHP - West Yellowstone

Payment Methods Accepted: Medicare, Medicaid, Private Insurance, Private Pay (sliding scale fees)

Ph: (406) 222-1111

www.chphealthmt.org

440 Yellowstone Ave | West Yellowstone, MT 59758

Flu and Pneumonia Immunizations Gallatin City-County Health Department

Payment Methods Accepted: Private Insurance, Private Pay (sliding scale fees)

Ph: (406) 582-3100

www.healthygallatin.org

215 W. Mendenhall | Bozeman MT 59715

Also shingles, tetanus and other immunizations by appointment.

DENTAL CARE

Community Health Partners CHP – Dental Clinic

Payment Methods Accepted: Medicare, Medicaid, Private Insurance, Private Pay (sliding scale fees)

Ph: (406) 585-1360

www.chphealthmt.org

1695 Tschache Ln | Bozeman MT 59715

Emergency, preventive, and restorative dental care.

DENTAL CARE FOR HOME-BOUND INDIVIDUALS

Smiles Across Montana

Payment Methods Accepted: Medicaid, Private Pay, Insurance

Ph: (406) 581-5293

Email: info@smilesacrossmontana.org

www.smilesacrossmontana.com

105 Grey Wolf Trail | Bozeman MT 59718

Dental hygiene service for those unable to get to a dentist office from their home, hospital, nursing home, shelter, etc.

HEARING AND VISION

Blind and Low Vision Services – Butte Regional Office

Payment Methods Accepted: Free Services

Ph: (406) 496-4925 Toll Free: (888) 279-7531

www.dphhs.mt.gov

700 Casey St., Suite B | Butte MT 59701

The Older Blind Program promotes independent living through evaluations, adaptive aids, mobility training, and referrals.

Gallatin Empire Lions Club

Payment Methods Accepted: Free Services

Email: info@gallatinempirelions.org

www.gallatinempirelions.org

205 Haggerty Ln #160 | Bozeman, MT 59715

Lions Clubs provide vision screenings and financial assistance for hearing, speech and vision needs such as glasses, hearing aids, therapy and surgery.

Medical Eye Specialists

Payment Methods Accepted: Insurance, Private Pay,
Credit Cards, Medicare, Medicaid

Ph: (406) 587-1245

medicaleyebozeman.com

3820 N. 27th Ave, Ste. 100 | Bozeman MT 59718

Comprehensive eye exams. Team of eye care providers with six surgeons including glaucoma and cornea sub-specialists.

Montana Association for the Blind – Bozeman Chapter

Payment Methods Accepted: Free Services

**Ph: (406) 551-4920 (leave a message)
or (406) 600-7548**

www.mabsop.org

Email: bozemanmab@gmail.com

Low vision equipment demonstrations and monthly chapter meetings with peer support. Club dues.

Montana Telecommunications Access Program

Payment Methods Accepted: Free Services

Toll Free: (800) 833-8503

relay@mt.gov

www.montanarelay.mt.gov

111 N. Last Chance Gulch, Suite 4C | Helena MT 59601

MTAP provides phones and related equipment for deaf, hard-of-hearing, speech and mobility disability individuals. In-home set-up provided. Must meet income guidelines.

Vance Thompson Vision

Payment Methods Accepted: Medicare, Medicaid, Private Insurance, Private Pay

Ph: (406) 219-0700

www.bozeman.vancethompsonvision.com

1925 N. 22nd Ave., Suite 201 | Bozeman MT 59718

Specializing in cataract, corneal, glaucoma surgeries and laser vision correction surgeries.

HOSPITAL AND LABORATORY SERVICES

Bozeman Health Big Sky Medical Center

Payment Methods Accepted: Medicare, Medicaid, Private Insurance, Private Pay

Ph: (406) 995-6995

www.bigskymedicalcenter.org

334 Town Center Ave. | Big Sky MT 59716

Emergency services, pharmacy, family medicine clinic, lab, imaging.

Bozeman Health Deaconess Hospital

Payment Methods Accepted: Medicare, Medicaid, Private Insurance, Private Pay

Ph: (406) 414-1010

www.bozemanhealth.org

937 Highland Blvd. 1st floor, Suite 5130 Entrance 5

Monday–Thursday 7 a.m. to 5:30 p.m.

Friday 7 a.m. to 5:30 p.m. | Saturday 8 a.m.–noon

Lab work and X-ray

Bozeman Health Outpatient Services at N. 19th

Payment Methods Accepted: Medicare, Medicaid, Private Insurance, Private Pay

Ph: (406) 414-4600

www.bozemanhealth.org

120 North 19th | Bozeman MT 59715

Monday - Friday | 7:00 a.m. to 3:30 p.m.

Lab work and urine drug screens.

Bozeman Health Belgrade Clinic

Payment Methods Accepted: Medicare, Medicaid,
Private Insurance, Private Pay

Ph: (406) 414-3334

206 Alaska Frontage Road, Ste 1000 | Belgrade MT 59714

Monday - Friday 7:30 am. to 4 p.m.

Monday - Friday | 7:00 a.m. to 3:30 p.m.

Lab work EKG's and urine drug screens.

Billings Clinic Bozeman

Payment Methods Accepted: Medicare, Medicaid,
Private Insurance, Private Pay

www.billingsclinic.com

Ph: (406) 898-1200

3905 Wellness Way | Bozeman MT 59718



MEDICAL EQUIPMENT

Contact local Senior Centers for availability of equipment to borrow.

Bluebird Medical Supply

Payment Methods Accepted: Medicare, Medicaid, Private Insurance, Private Pay, VA

Ph: (406) 220-5704

www.bluebirdmedicalsupply.com

117 E. Oak St., Suite 1 | Bozeman MT 59715

Sell, rent and service durable medical equipment.

Bozeman Health Home Oxygen

Payment Methods Accepted: Medicare, Medicaid, Private Insurance, Private Pay

Ph: (406) 414-5053

www.bozemanhealth.org/services/home-oxygen/

905 Highland Boulevard | Bozeman MT 59715

Lincare

Payment Methods Accepted: Medicare, Medicaid, Private Insurance, Private Pay

Ph: (406) 585-5582

www.lincare.com

28A Pronghorn Trail | Bozeman MT 59718

Oxygen, respiratory and home infusion products and services.

Price Rite Medical Equipment & Pharmacy

Payment Methods Accepted: Medicare, Medicaid,
Private Insurance, Private Pay

Ph: (406) 587-0608

www.priceritemedicequipment.com

910 N. 7th Ave. | Bozeman MT 59715

*Home oxygen, CPAP, wheelchairs and other medical
equipment and maintenance.*

MENTAL HEALTH

See “Community Clinics” to contact your local CHP

Community Health Partners

Payment Methods Accepted: Call for information

www.chphealthmt.org

Belgrade, Bozeman, West Yellowstone MT

*One-on-one therapy, anger management, chronic pain
management groups, behavioral therapy and other
resources.*

Western Montana Mental Health Center

Payment Methods Accepted: Medicare, Medicaid,
Private Insurance, Private Pay (sliding scale fees)

Ph: (406) 556-6500

www.wmmhc.org

699 Farmhouse Lane | Bozeman MT 59715

The Help Center

Payment Methods Accepted: Free Services

Ph: Crisis Hotline 988

Walk-in 406-586-3333

Business Line (406) 587-7511

www.bozemanhelpcenter.org

421 E. Peach | Bozeman MT 59715

24 hour/365 days crisis hotline and sexual assault counseling center.

Senior Reach (CHP & HRDC)

Payment Methods Accepted: Call for information

Ph: (406) 587-5444

Thehrdc.org/senior-service/behavioral-health/

300 N. Willson, Ste. 3008 | Bozeman MT 59715

In-home, short-term counseling for seniors.

PHARMACY AND IN-HOME INFUSIONS

Option Care Infusion Services

Payment Methods Accepted: Medicare, Medicaid,
Private Insurance, Private Pay

Ph: (406) 587-1050

www.optioncare.com

2304 N. 7th Ave., Suite H | Bozeman MT 59715

Provides intravenous medications in office or at your home.



TRANSITIONAL CARE AND REHABILITATION

Gallatin Rest Home

Payment Methods Accepted: Medicare, Medicaid, Private Insurance, Private Pay

Ph: (406) 582-3300

1221 W. Durston | Bozeman MT 59715

Long-term care and short-term rehabilitation.

To keep the heart unwrinkled, to be hopeful, kindly, cheerful, reverent that is to triumph over old age.

Thomas Bailey Aldrich

MISCELLANEOUS SERVICES

MOVING AND DECLUTTERING

Rock Steady Movers

Ph: (406) 599-9402

Montana Movers & Shakers

Ph: (406) 548-5343

On The Move

Ph: (406) 577-2124

Move It!

Ph: (406) 579-8596

Big Sky Movers

Ph: (406) 396-9840

BERG Movers

Ph: (406) 214-2230

Mountain West Movers

Ph: (406) 551-5736

Interwest Moving & Storage

Ph: (406) 624-6888

PET SERVICES

Peaceful Journey

Ph: (406) 414-7240

www.peacefuljourneyvet.com

In-home pet hospice and euthanasia.

SENIOR CENTERS

Senior Centers offer congregational meals and Meals-on-Wheels, as well as social, recreational, educational and health care services. Activities vary by location.

Belgrade Senior Center

Payment Methods Accepted: Private Pay

Ph: (406) 388-4711

www.belgradeseniorcenter.com

92 E. Cameron Ave. | Belgrade MT 59714

Bozeman Senior Center

Payment Methods Accepted: Private Pay

Ph: (406) 586-2421

www.bozemanseniorcenter.org

807 N. Tracy | Bozeman MT 59715

Manhattan Senior Center

Payment Methods Accepted: Private Pay

Ph: (406) 284-6501

manhattanseniorcenter@gmail.com

102 E. Main | Manhattan MT 59741

Three Rivers Senior Citizens Club

Payment Methods Accepted: Private Pay

Ph: (406) 285-3235

19 E. Cedar St. | Three Forks MT 59752

West Yellowstone Senior Center

Payment Methods Accepted: Private Pay

Ph: (406) 640-0241

10 South Geyser St. | West Yellowstone MT 59758

SUPPORT GROUPS AND SERVICES

AARP

Payment Methods Accepted: Call for information

Ph: 1-888-687-2277 - Facilitator

or call Bozeman Senior Center at (406) 586-2421
Bozeman MT 59715

Monthly meetings (except for summer) open to the public.

Alzheimer's Association 24/7 Helpline

Payment Methods Accepted: Free

Ph: (800) 272-3900 Toll-free

alz.org/montana

Members of the public and healthcare professionals can speak to resource specialists and counselors.

Befrienders

Payment Methods Accepted: Free Services

Ph: (406) 522-8169

info@befriendersbozeman.org

www.befriendersbozeman.org

807 N. Tracy | Bozeman MT 59715

Matches volunteers with seniors for companionship.

Cancer Support Community Montana

Payment Methods Accepted: Free Services

Ph: (406) 582-1600

Email: info@cancersupportmontana.org

www.cancersupportmontana.org

102 S. 11th Ave. | Bozeman MT 59715

Educational and support services offered to individuals and families affected by cancer.

Community Health Partners (see “medical” section)

Payment Methods Accepted: Call for information
www.chphealth.org

Belgrade, Bozeman, West Yellowstone MT

Classes, support groups and mental health services offered.

Gallatin County Love INC.

Payment Methods Accepted: Free Services

Ph: (406) 587-3008

www.loveincgc.org

P.O. Box 7117 | Bozeman, MT 59771

Gallatin County Parkinson’s Support Group

Payment Methods Accepted: Free

Ph: 406-581-7317 Facilitator

Email: Psimmons100@gmail.com

Meets third Tuesday each month from 1:30 – 3:30 pm at The Springs, 2632 Catron Street, Bozeman, MT 59718

The Help Center Telecare Program

Payment Methods Accepted: Free Services

Ph: (406) 587-7511

Info & Referral dial 2-1-1

info@bozemanhelpcenter.org

www.bozemanhelpcenter.org

421 E. Peach St. | Bozeman MT 59715

Telecare is a service where a daily phone call is made to elderly or homebound individuals as a social call and/or medication reminder.

Montana Tobacco Quit Line

Payment Methods Accepted: Free Services

Ph: (406) 582-3107 Toll Free: 1-800-QUIT-NOW

www.healthygallatin.org/community-health/tobacco/

Gallatin City-County Health Department

215 W. Mendenhall | Bozeman MT 59715

Enrolled individuals receive a personalized plan, coaching sessions, nicotine replacement therapy, educational materials and other support.

TRANSPORTATION

See “Care at Home – Personal Care” for more transportation options.

Galavan Transit

Payment Methods Accepted: Free Services, donations accepted.

Ph: (406) 587-2434

www.thehrdc.org/senior-services/senior-transportation/
Bozeman MT 59715

Provides door-to-door transportation for seniors 59+ or those with disabilities. Serving city of Bozeman with limited service in Belgrade, Manhattan and Three Forks.

Greater Valley Taxi

Payment Methods Accepted: Private Pay

Ph: (406) 388-9999 or (406) 587-6303

Serving Bozeman and Belgrade areas.

Skyline Bus

Payment Methods Accepted: Private Pay

Ph: (406) 995-6287

Email: info@skylinebus.com

www.skylinebus.com

P.O. Box 161104 | Big Sky MT 59716

Free local service within Big Sky. Use a bus pass or cash to ride between Bozeman and Big Sky year-round. Lift available with advance notice.

Streamline

Payment Methods Accepted: Free Services

Ph: (406) 587-2434

Email: streamlinebus@thehrdc.org

www.streamlinebus.com

Bozeman MT 59715

Fixed-route bus system servicing Bozeman area. Wheelchair accessible.

“Count your age by friends, not years. Count your life by smiles, not tears.”

– John Lennon

VETERANS SERVICES

Belgrade Family Assistance Center

Payment Methods Accepted: VA Benefit.

Call for more information.

Toll Free: (406) 324-5021

www.MontanaGuardFamily.org

Belgrade Armory | 350 Airport Rd. | Belgrade MT 59714

Contact this local office first regarding Military ID Cards/ Defense Eligibility Enrollment Reporting System, TRICARE Health Insurance issues, financial or legal issues, counseling resources, crisis assistance and more.

Billing inquiries

Payment Methods Accepted: VA Benefit.

Call for more information.

Ph: (888) 800-698-2411

www.montana.va.gov

Bozeman Veterans Affairs Community-Based Outpatient Clinic

Payment Methods Accepted: VA Benefit. Call for more information.

Ph: (406) 582-5300

1101 East Main Street | Bozeman, MT 59715

Eastern Montana Veterans Home

Payment Methods Accepted: VA Benefit.

Call for more information.

Ph: (406) 377-8117

2000 Montana Ave | Glendive, MT 59330

Healthcare eligibility and enrollment

Payment Methods Accepted: VA Benefit.

Call for more information.

Ph: (406) 447-7350 Toll Free: (877) 468-8387

Fort Harrison MT

Medication refills, appointment scheduling, patient advocate

Payment Methods Accepted: VA Benefit.

Call for more information.

Toll Free: (877) 4MT-VETS or 468-8387

Fort Harrison MT

Montana Veterans Home

Payment Methods Accepted: VA Benefit. Call for more information.

Ph: (406) 892-3256

www.dphhs.mt.gov/healthcarefacilities/mvh/

Columbia Falls MT

Veterans Affairs Caregiver Support

Ph: (855) 260-3274

www.montana.va.gov

Veterans Affairs Medical Center

Payment Methods Accepted: VA Benefit.

Call for more information.

Ph: (406) 442-6410

Toll Free: (877) 4MT-VETS or 468-8387

3687 Veterans Drive | Fort Harrison, MT 59636

Veterans Affairs Service Office

Payment Methods Accepted: VA Benefit. Call for more information.

Ph: (406) 388-4601

350 Airport Road | Belgrade, MT 59714

Veterans Transportation Service

Payment Methods Accepted: VA Benefit.
Call for more information.

Ph: (406) 447-6270

Wheelchair accessible vans.

Veterans Crisis Line

Payment Methods Accepted: VA Benefit.
Call for more information.

Toll Free: (800) 273-8255, press 1



VOLUNTEER OPPORTUNITIES

The following list includes just a few ways to get involved. You can also contact the following agencies if you need assistance.

Befrienders

Payment Methods Accepted: Free Services

Ph: (406) 522-8169

info@befriendersbozeman.org

www.befriendersbozeman.org

Bozeman Senior Center

807 N. Tracy | Bozeman MT 59715

Befrienders matches volunteers with seniors for companionship. Volunteers commit to visiting at least once a week for at least 6 months.

Bozeman Health Volunteer Services

Payment Methods Accepted: Free Services

Ph: (406) 414-5000

www.bozemanhealth.org

915 Highland Blvd. | Bozeman MT 59715

Variety of opportunities for volunteers who commit to four hours a week for four months minimum.

Cancer Support Community Montana

Payment Methods Accepted: Free Services

Ph: (406) 582-1600

Email: info@cancersupportmontana.org

www.cancersupportmontana.org

102 S. 11th Ave. | Bozeman MT 59715

Educational and support services offered to individuals and families affected by cancer.

Eagle Mount

Payment Methods Accepted: Private Pay

Ph: (406) 586-1781 Fax: (406) 586-5794

eaglemount@eaglemount.org

www.eaglemount.org

6901 Goldenstein Lane | Bozeman MT 59715

Therapeutic recreation. Scholarships available.

Gallatin County Love INC.

Payment Methods Accepted: Free Services

Ph: (406) 587-6395 to volunteer

Fax: (406) 585-3378

Helpline (406) 587-3008

www.loveincgc.org

PO Box 7117 | Bozeman MT 59771

Variety of opportunities for volunteers: drivers, budget coaches, movers, carpenters, etc.

HRDC

Payment Methods Accepted: Call for information

Ph: (406) 587-4486

hello@thehrdc.org | www.thehrdc.org

32 S. Tracy Ave.

Bozeman MT 59715

Volunteers needed in a variety of areas. Call for information.

Retired Senior Volunteer Program (RSVP)

Payment Methods Accepted: Call for information

Ph: (406) 587-5444

rsvp@thehrdc.org | www.thehrdc.org

Bozeman Senior Center

807 N. Tracy | Bozeman MT 59715

HRDC program that helps those 55+ find meaningful volunteer opportunities locally.

Thrive Child Advancement Project (CAP Mentor)

Payment Methods Accepted: Free Services

Ph: (406) 587-3840

www.allthrive.org

407 S Ferguson Ave | Bozeman MT 59715

Commit to an hour a week to mentor and inspire a local student.



“Never doubt that a small group of thoughtful, committed citizens can change the world: indeed, it’s the only thing that ever has.”

Margaret Mead

Healthier days.

Brighter futures.

Stronger communities.



Bozeman Health

915 Highland Boulevard
Bozeman, MT 59715

explore more at BozemanHealth.org

Revised March 2024